

12

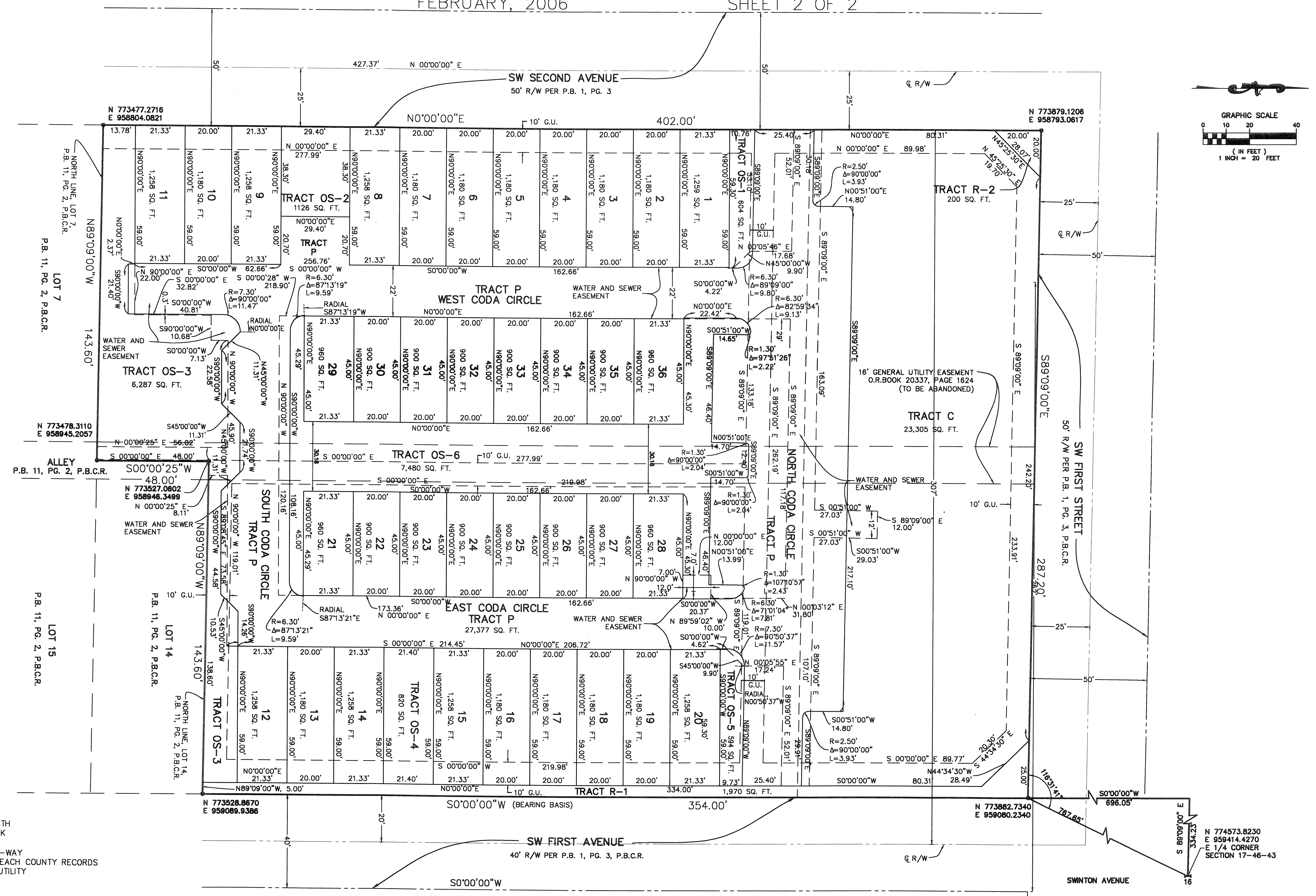
# "CODA"

A RESUBDIVISION OF LOTS 1 THROUGH 26, INCLUSIVE ALONG WITH THE NORTH 306 FEET OF 16-FOOT WIDE PORTION OF THE ALLEY PARCEL, ALL OF BLOCK 54 OF "HEISLEY ESTATES SUBDIVISION" (PLAT BOOK 13, PAGE 48 PALM BEACH COUNTY RECORDS); AND ALSO LOTS 5, 6 AND 13, ALONG WITH THAT PORTION OF THE ALLEY PARCEL 8 FEET EAST OF SAID LOTS 5 AND 6, AND THAT PORTION OF SAID ALLEY PARCEL 8 FEET WEST OF SAID LOT 13, ALL OF BLOCK 54 OF "RE-SUBDIVISION SOUTH HALF OF BLOCK 54" (PLAT BOOK 11, PAGE 2 PALM BEACH COUNTY RECORDS); ALL IN SECTION 17, TOWNSHIP 46 SOUTH, RANGE 43 EAST

CITY OF DELRAY BEACH, PALM BEACH COUNTY, FLORIDA

FEBRUARY, 2006

SHEET 2 OF 2



**LEGEND:**

- Δ - ANGLE
- R - RADIUS
- L - ARC LENGTH
- P.B. - PLAT BOOK
- PG. - PAGE
- R/W - RIGHT-OF-WAY
- P.B.C.R. - PALM BEACH COUNTY RECORDS
- G.U. - GENERAL UTILITY

N 774573.8230  
E 959414.4270  
E 1/4 CORNER  
SECTION 17-46-43